

Weekly Disease Surveillance Report



2024 Reporting Week 09: February 25 — March 2

This weekly report is produced by the DOH-Okaloosa Epidemiology Section to provide situational awareness to community partners. Data is subject to change as additional information is gathered.

Updates and Recommendations for the 2023-2024 Flu Season

- According to the CDC, three flu vaccines are preferentially recommended for people 65 years and older: **Fluzone High-Dose Quadrivalent vaccine, Flublok Quadrivalent recombinant flu vaccine, and Flud Quadrivalent adjuvanted flu vaccine.** Based on a review of available studies, these vaccines are potentially more effective than standard dose unadjuvanted flu vaccines for this age group. There is no preferential recommendation for people younger than 65 years.
- **The composition of flu vaccines has been updated.** Please visit [Information for the 2023-2024 Flu Season](#) to view the make-up of the egg-based and cell- or recombinant-based flu vaccines.
- **People with egg allergy may get any vaccine (egg-based or non-egg-based) that is otherwise appropriate for their age and health status.** All vaccines should be given in settings where allergic reactions can be recognized and treated quickly.
- Please visit [Summary: 'Prevention and Control of Seasonal Influenza with Vaccines: Recommendations of the Advisory Committee on Immunization Practices \(ACIP\)—United States, 2023-24'](#) for a complete resource regarding the 2023-2024 Influenza Season and Vaccination Recommendations.

ILI Trends

Influenza-like illness (ILI) in Okaloosa decreased during Week 09, yet remains higher than the previous year's level (current level: 3.55%; last year: 2.14%). Please stay vigilant, promote vaccination, and visit the weekly [Florida FLU REVIEW](#).

COVID-19 Trends

COVID-19 hospital admission levels for Okaloosa County remained LOW for Week 09. For more information on the recommended actions based on the current levels, please visit the [CDC COVID-19 by County](#) webpage.

Contact Us:

Florida Department of Health
in Okaloosa County

Epidemiology Section

24/7 Disease Reporting:
850-833-9065

Confidential Fax:

850-833-7577

okaloosaepi@flhealth.gov

COVID-19 Corner

Week 09 Hospital Admission Level

COVID-19 Hospital Admissions Level	New Hospital Admissions per 100K Population per Week
LOW	5.5

PREVIOUS WEEK LEVEL: LOW

The Community Level has been retired with the end of the federal COVID-19 Public Health Emergency (PHE).

As a replacement, COVID-19 Hospital Admission Level will be used as an indicator for recommended interventions in the community based on each level and individual or community focus.

For more information on the levels and recommended actions based on the current level, please visit the [CDC COVID-19 by County](#) webpage.

HIGH	≥ 20.0
MEDIUM	10.0 - 19.9
LOW	<10.0

In the Know: Measles in Florida

Measles cases have been reported in Broward County, as well as a travel-related case in Central Florida. As of February 29, 2024, a total of 41 measles cases were reported by 16 jurisdictions: Arizona, California, Florida, Georgia, Indiana, Louisiana, Maryland, Michigan, Minnesota, Missouri, New Jersey, New York City, Ohio, Pennsylvania, Virginia, and Washington.

Because measles is highly contagious, the Florida Department of Health is providing this [linked information](#) to health care providers regarding the identification, testing, and management of suspected cases.

If you suspect measles in a patient with a febrile rash illness, please contact DOH-Okaloosa at 850-833-9065 (or your local [county health department](#)) **immediately** and review the linked information mentioned above. Suspected measles cases are required to be reported immediately to ensure prompt response and public health efforts.

For the latest information about measles, please visit the [CDC Measles For Healthcare Providers](#) resource.



Influenza-Like Illness

Week 09: February 25 - March 2

Influenza-like Illness (ILI) is defined as fever greater than or equal to 100°F AND cough and/or sore throat in the absence of another known cause.

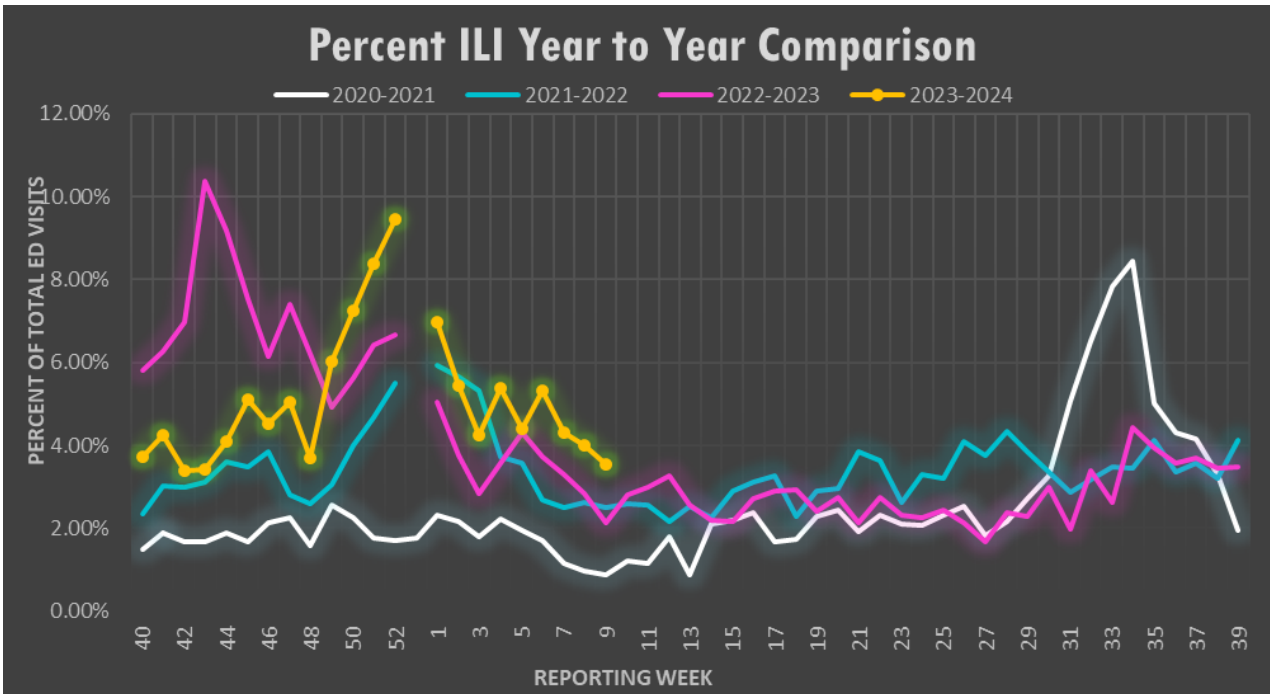


Figure 2: Annual comparison of the percent of all hospital ED visits due to ILI for Okaloosa county for the 2020-21, 2021-22, 2022-23 and 2023-2024 influenza seasons by week. Data source: ESSENCE

ANALYSIS: During Week 09, flu reporting partners and ESSENCE (a syndromic surveillance system) reported a decrease in ILI activity for Okaloosa County. The percentage of ILI ED visits in Okaloosa County decreased this week (3.99% during Week 08 to 3.55% during Week 09). Flu partners reported 33 positive rapid flu tests this week (13 Influenza A and 20 Influenza B). Over the past three weeks, no influenza specimens submitted to the state lab were positive. There were no ILI admissions or deaths reported by flu partners this week. One outbreak has been reported in the past 3 weeks. The percentage of total ILI ED visits for Week 08 is higher than that of Week 08 last year. *Note:* Other respiratory syndromes can be represented by increased ILI case numbers. Data Source: ESSENCE

% ILI by Age Group Week 09, 2024			
Age Range	ILI Visits	Total ED Visits	% Total ILI Visits
0-4	23	166	13.86%
5-19	28	302	9.27%
20-34	18	487	3.70%
35-54	9	582	1.55%
55-74	7	564	1.24%
75+	3	375	0.80%

Data Source: ESSENCE

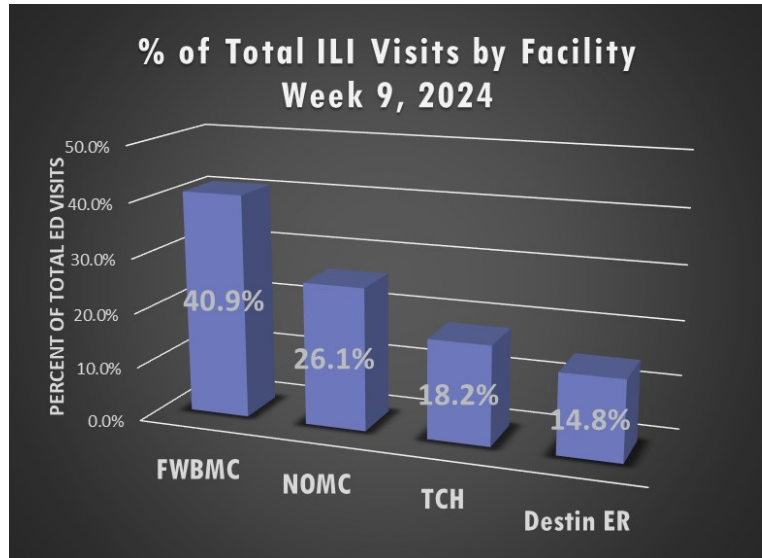


Figure 3: Hospital ED visits meeting ILI criteria stratified by facility. Percentages calculated based on total number of ILI ED visits. (n=88). Data source: ESSENCE



Syndromic Surveillance

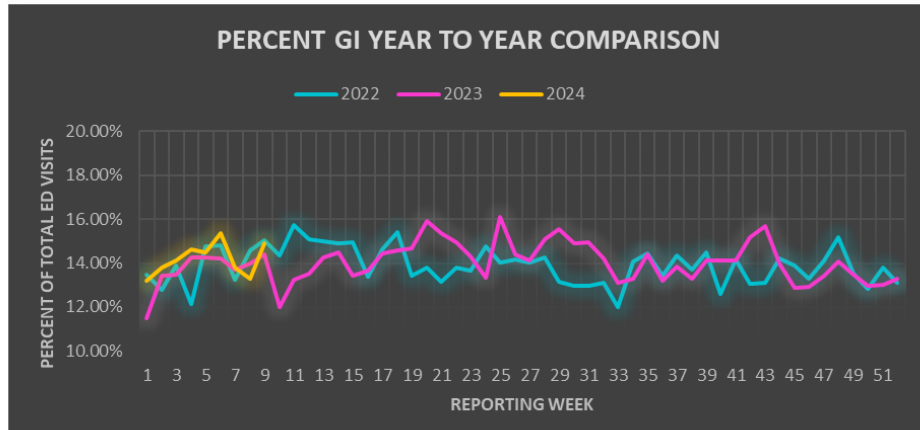
Week 09: February 25 - March 2

Gastro-intestinal Illness (GI)

Figure 4:

Annual comparison for the percent of GI for all Okaloosa County hospital ED visits week to week for 2022, 2023, and 2024.

Data Source: ESSENCE

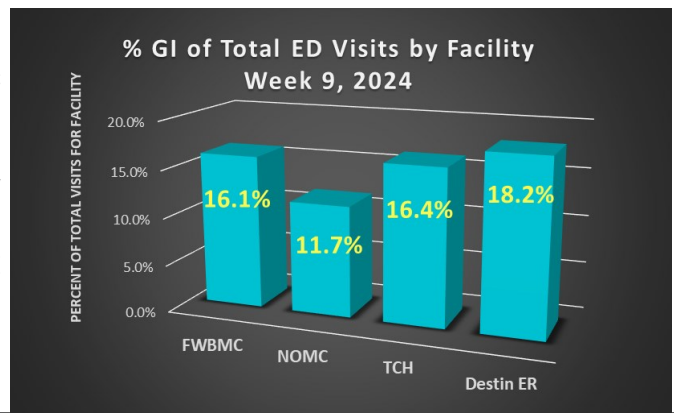


% GI by Age Group Week 09, 2024			
Age Range	GI Visits	Total ED Visits	% Total GI Visits
0-4	22	166	13.25%
5-19	41	302	13.58%
20-34	90	487	18.48%
35-54	99	582	17.01%
55-74	73	564	12.94%
75+	45	375	12.00%

Figure 5:

Hospital emergency room visits due to GI illness stratified by facility.

Data source: ESSENCE

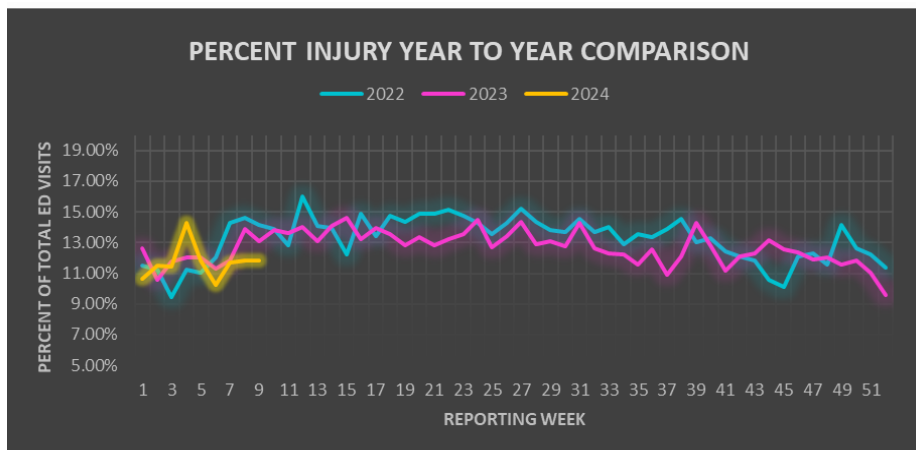


Injury

Figure 6:

Annual comparison for the percent of Injury for all Okaloosa County hospital ED visits week to week for 2021, 2022, and 2023.

Data Source: ESSENCE

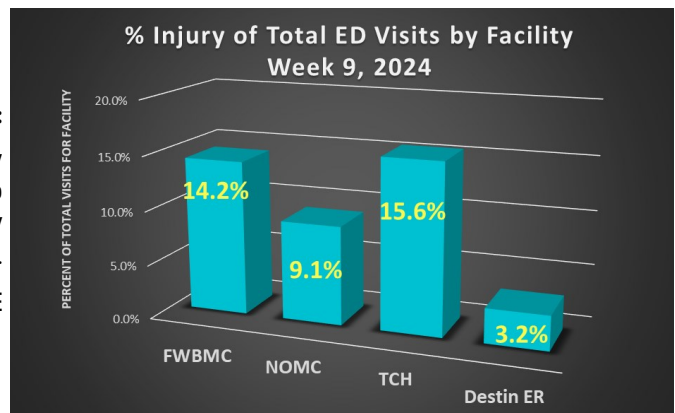


% Injury by Age Group Week 09, 2024			
Age Range	Injury Visits	Total ED Visits	% Total Injury Visits
0-4	27	166	16.27%
5-19	48	302	15.89%
20-34	65	487	13.35%
35-54	48	582	8.25%
55-74	59	564	10.46%
75+	47	375	12.53%

Figure 7:

Hospital emergency room visits due to Injury stratified by facility.

Data source: ESSENCE





Syndromic Surveillance

Week 09: February 25 - March 2

Total ED Visits by Syndrome

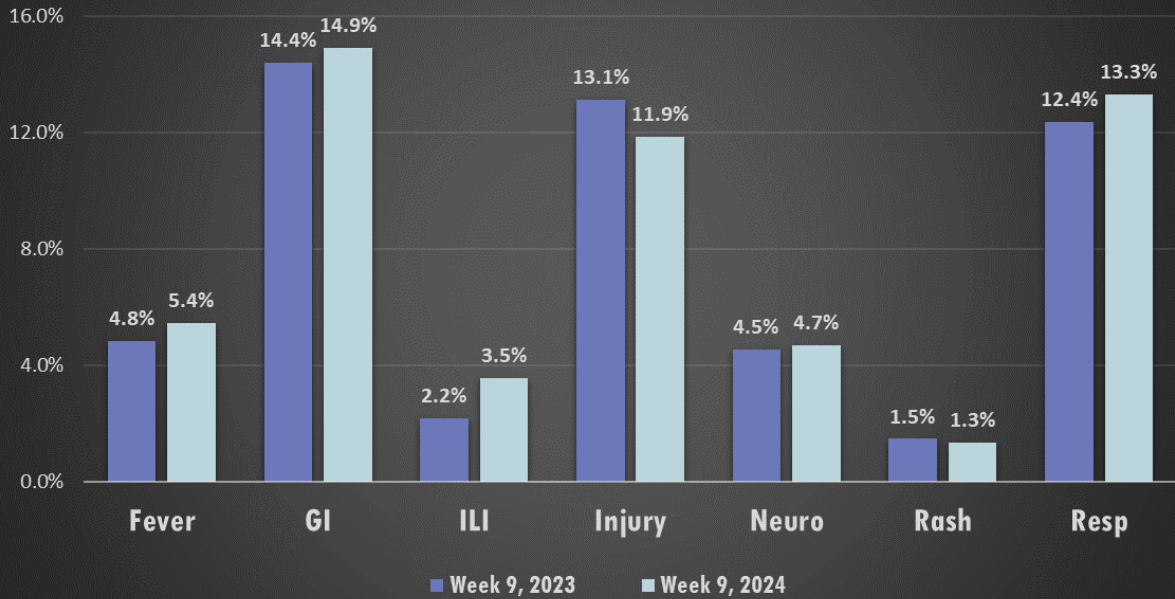
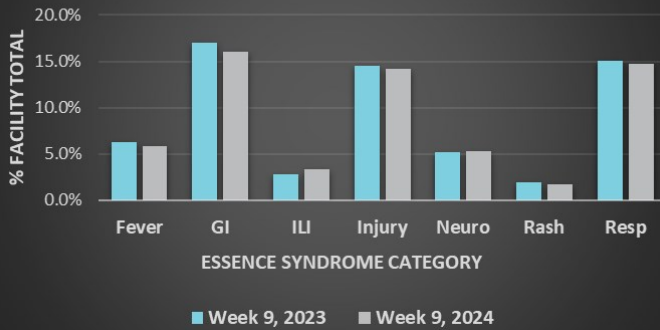


Figure 8: Hospital Emergency Department (ED) visits from 2024 Week 09 by select syndrome category. Percentages calculated based on total number of ED visits (n=2480). Some syndrome categories are not represented; therefore, represented percentages will not total 100%. Data source: ESSENCE

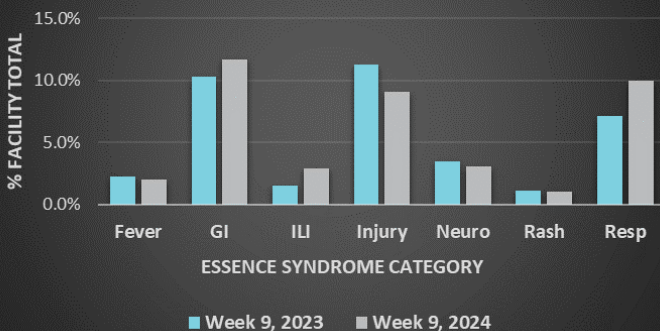
Fort Walton Beach Medical Center ED Presentations



Week 09 - Fort Walton Beach Medical Center

Age Range	Top Syndrome	Total ED Visits for Syndrome
0-4	RESP	28
5-19	RESP	40
20-34	GI	50
35-54	GI	41
55-74	RESP	39
75+	INJURY	23

North Okaloosa Medical Center ED Presentations



Week 09 - North Okaloosa Medical Center

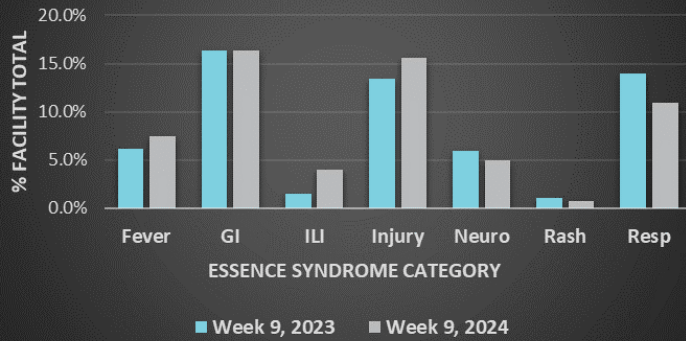
Age Range	Top Syndrome	Total ED Visits for Syndrome
0-4	FEVER	10
5-19	RESP	15
20-34	GI	24
35-54	GI	30
55-74	INJURY	20
75+	RESP	16



Syndromic Surveillance

Week 09: February 25 - March 2

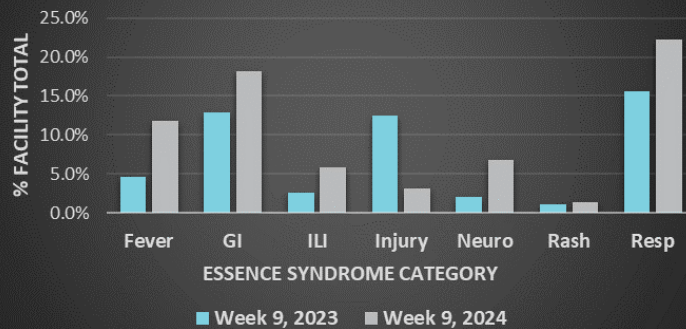
Twin Cities Hospital ED Presentations



Week 09 - Twin Cities Hospital

Age Range	Top Syndrome	Total ED Visits for Syndrome
0-4	FEVER	7
5-19	INJURY	10
20-34	GI	12
35-54	GI	13
55-74	GI	19
75+	INJURY	18

Destin ER ED Presentations



Week 09 - Destin ER

Age Range	Top Syndrome	Total ED Visits for Syndrome
0-4	RESP	7
5-19	RESP	8
20-34	GI, RESP	4, 4
35-54	GI	15
55-74	RESP	14
75+	GI	10

Week 08 - Okaloosa County

Age Group	Top Syndrome
0-4	RESP
5-19	RESP
20-34	GI
35-54	GI
55-74	RESP
75+	INJURY



Data Source: ESSENCE